

# HHH DEIS Comments & Adjudication

## **Key Project Problems**

- Questionable need – power not timely, not reliable or steady, no buyers.
- Project Siting, Description, Component Locations
- Lack of Alternatives – all or nothing approach, rejected hybrid options
- Significant Impacts - too close, too many turbines, harms too many people.
- Disproportionate impacts on people in Benton County.
- SEPA compliance – ASC, Updated ASC, DEIS, & FEIS

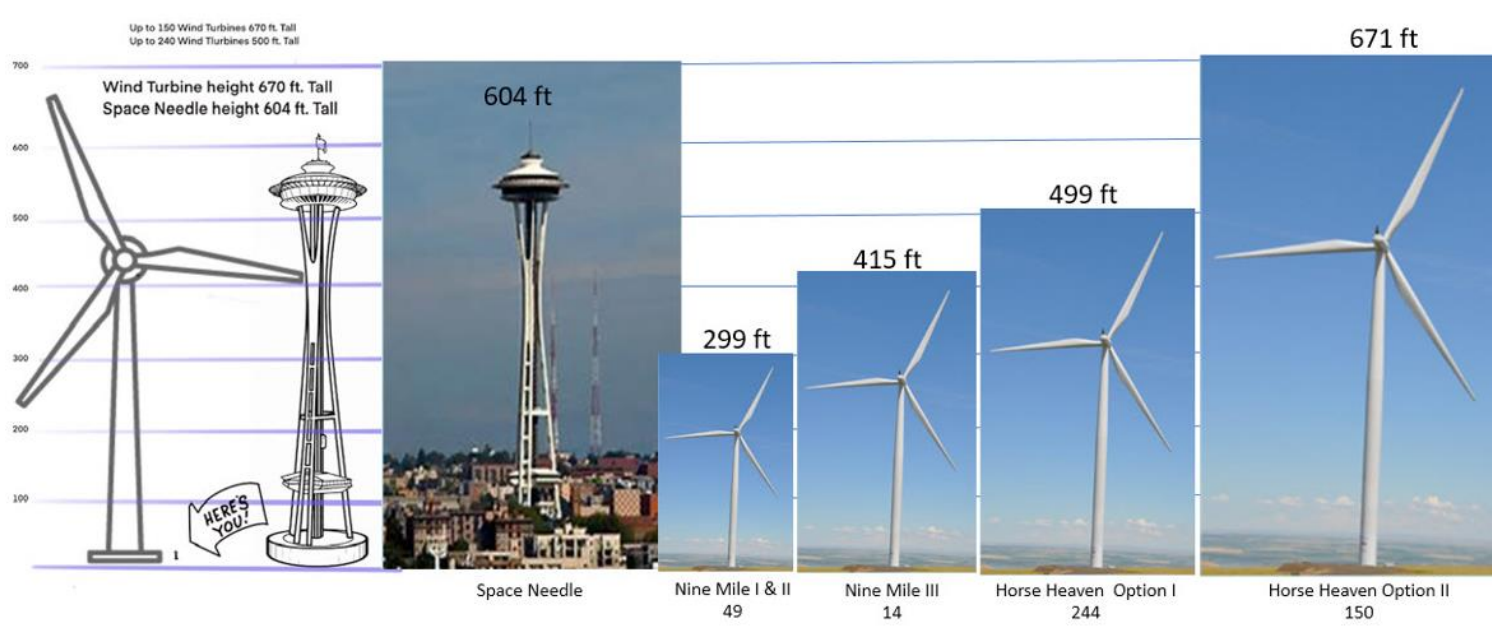
## **Significant Impacts**

- Visual Impacts & ADLS
- Wildlife Corridor & Habitat
- Cultural Resources
- Environmental & Economic Impacts, Dust, Real Estate, Tourism, Transportation ...

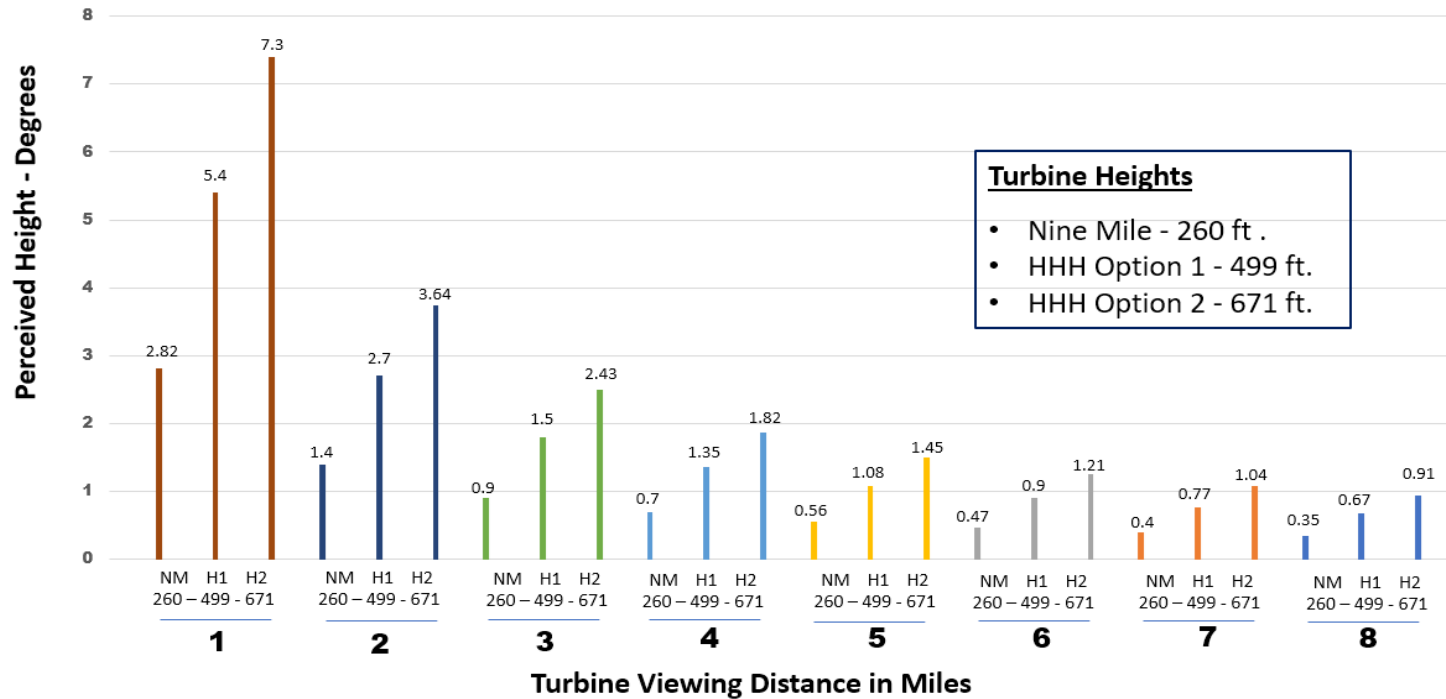
## **Goal of Balancing in compliance with the RCW**

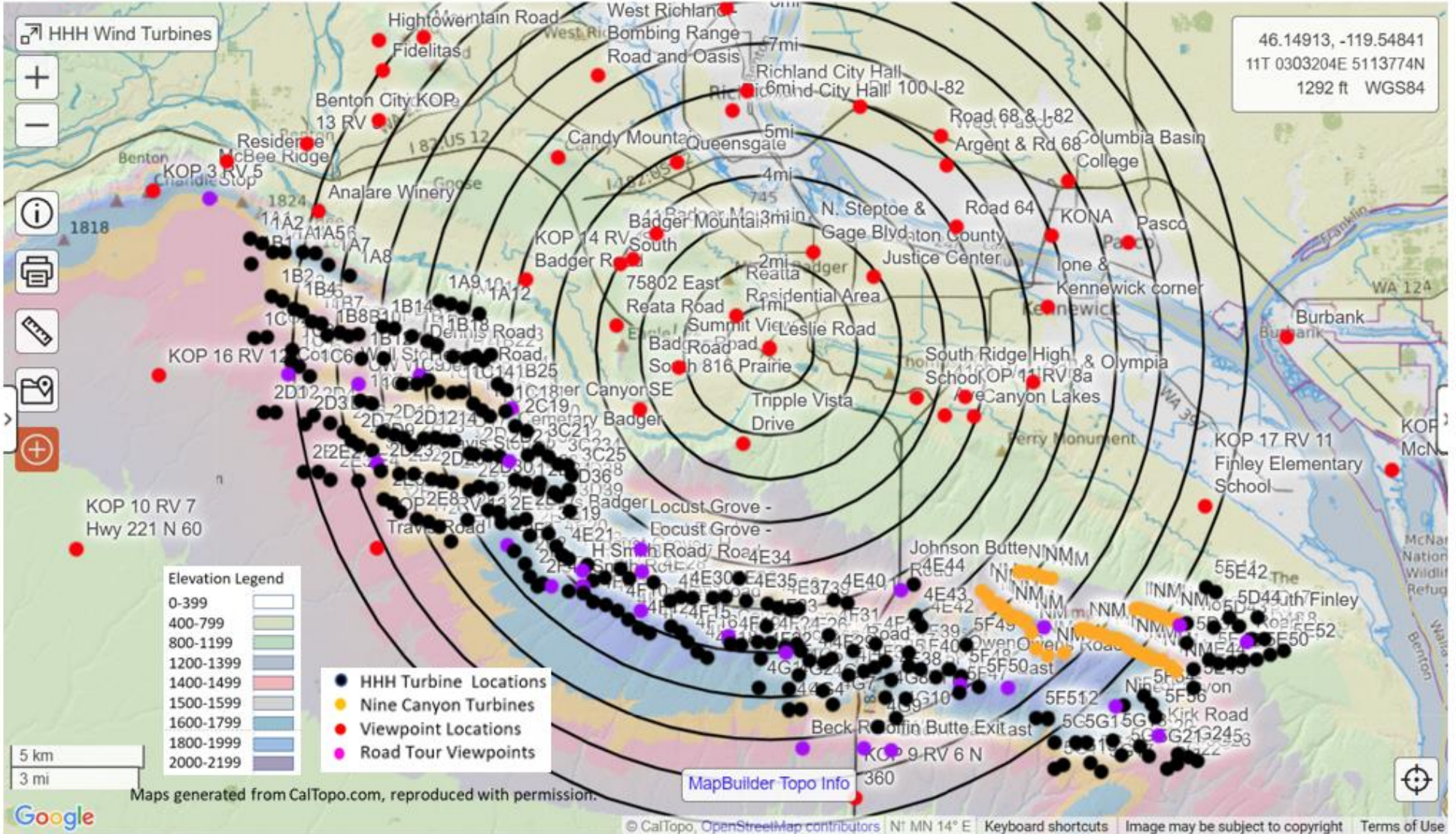
- Viable Alternatives That Produce Real Benefits
- Eliminate & Relocate Turbines to Protect People & the Environment

# Space Needle Wind Turbine Height Comparison



## Perceived Distance of Wind Turbines





46.14913, -119.54841  
 11T 0303204E 5113774N  
 1292 ft WGS84

Elevation Legend

0-399	[Lightest Green]
400-799	[Light Green]
800-1199	[Medium Green]
1200-1399	[Dark Green]
1400-1499	[Light Blue]
1500-1599	[Medium Blue]
1600-1799	[Dark Blue]
1800-1999	[Purple]
2000-2199	[Darkest Purple]

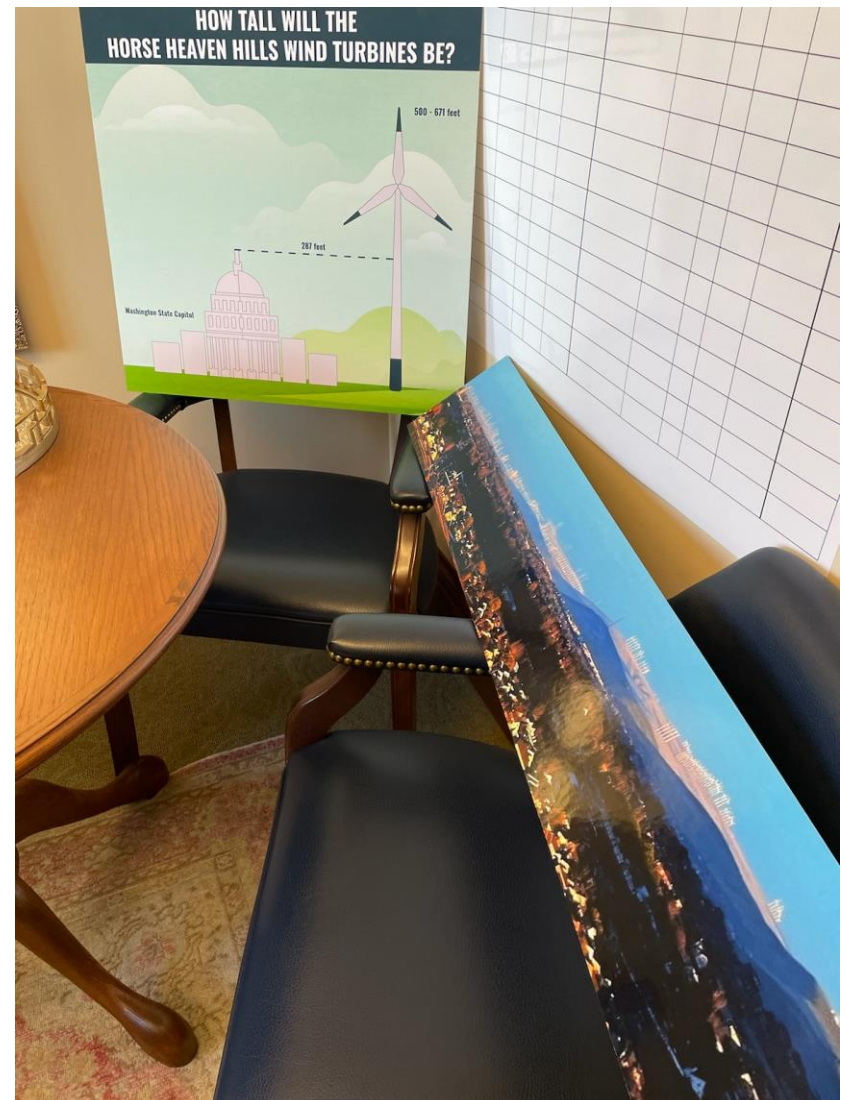
- HHH Turbine Locations
- Nine Canyon Turbines
- Viewpoint Locations
- Road Tour Viewpoints



Issues in Common	CFE	YN	Benton County	WDFW	Benton PUD	TC CARES
Need/Purpose / Power Generation /Project Output/ Wind /Solar /BESS	X				X	X
Lack of Alternatives Development/ Overall Renewable Plan	X		X		X	X
Wildlife – Birds & Bats/Cumulative Impacts	X			X		X
Wildlife & Habitat	X	X		X		X
Wildlife - Townshend Ground Squirrel	X			X		
Engaging the Tribes	X	X				X
Location/Proximity to Urban Area			X			X
Air Quality – Fugitive Dust			X			X
Transportation/Level of Service/Safety/Road Impacts/Route Limitations/Volume		X	X			X
Ag Land Conversion – Cumulative Impacts			X			
Mitigation Measures / Siting		X	X		X	X
Visual Impacts /Aesthetics		X	X			X
Adverse Impacts/Cumulative Impacts		X	X	X		x
Historic & Cultural Resources / Vegetation/Wildlife/Recreation		X				X
Procedural Issues	Need Cooperation	Need Cooperation	Need Cooperation	Need Cooperation	Need Cooperation	\$\$\$ Need Funding

# ADLS – SHB 1173 – Dark skies can be safe skies

- December 6, 2022 TCC Proposal to Rep. April Connors & Rep. Mark Klicker.
- January 6, 2023 – House Bill 1173 Prefiled for introduction.
- February 16, 2023 Hearing in the House Environmental & Energy Committee.
- February 27, 2023 House passed HB 1173 on a vote of 94 to 1.
- March 17, 2023 – Hearing in the Senate Committee on Environment, Energy & Technology
- April 8, 2023, Senate passed SHB 1173 on a vote of 84 to 1.
- Awaiting Legislature release and Governor’s action.



Grain Elevator  
Kennewick

Combine Hills Projects

Walmart  
Kennewick

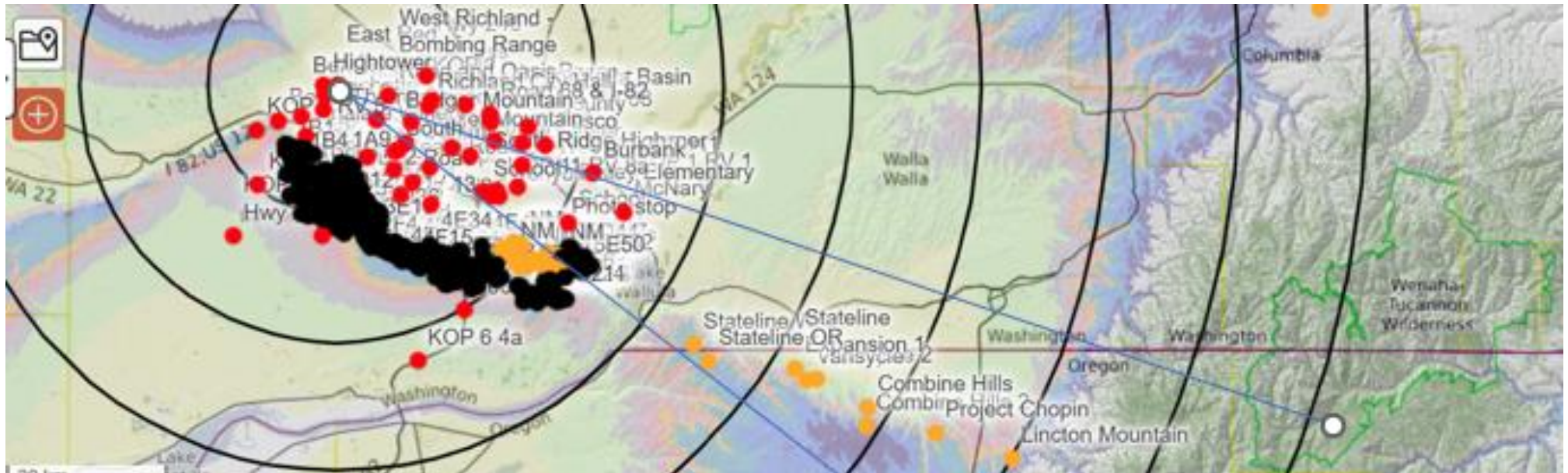
Radio Tower on American Hill  
WA 397 & S Finley Rd

Thompson Hill  
Kennewick

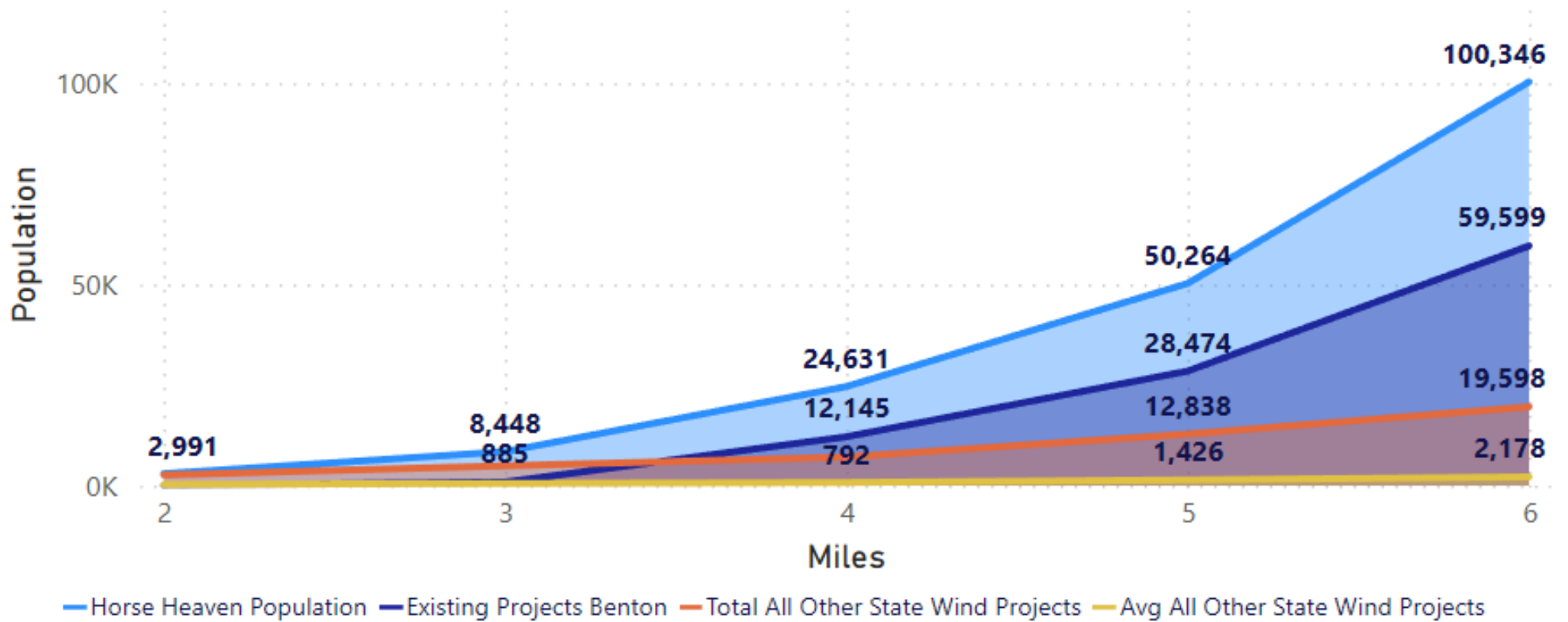
Stateline Projects



West Richland in Shadow

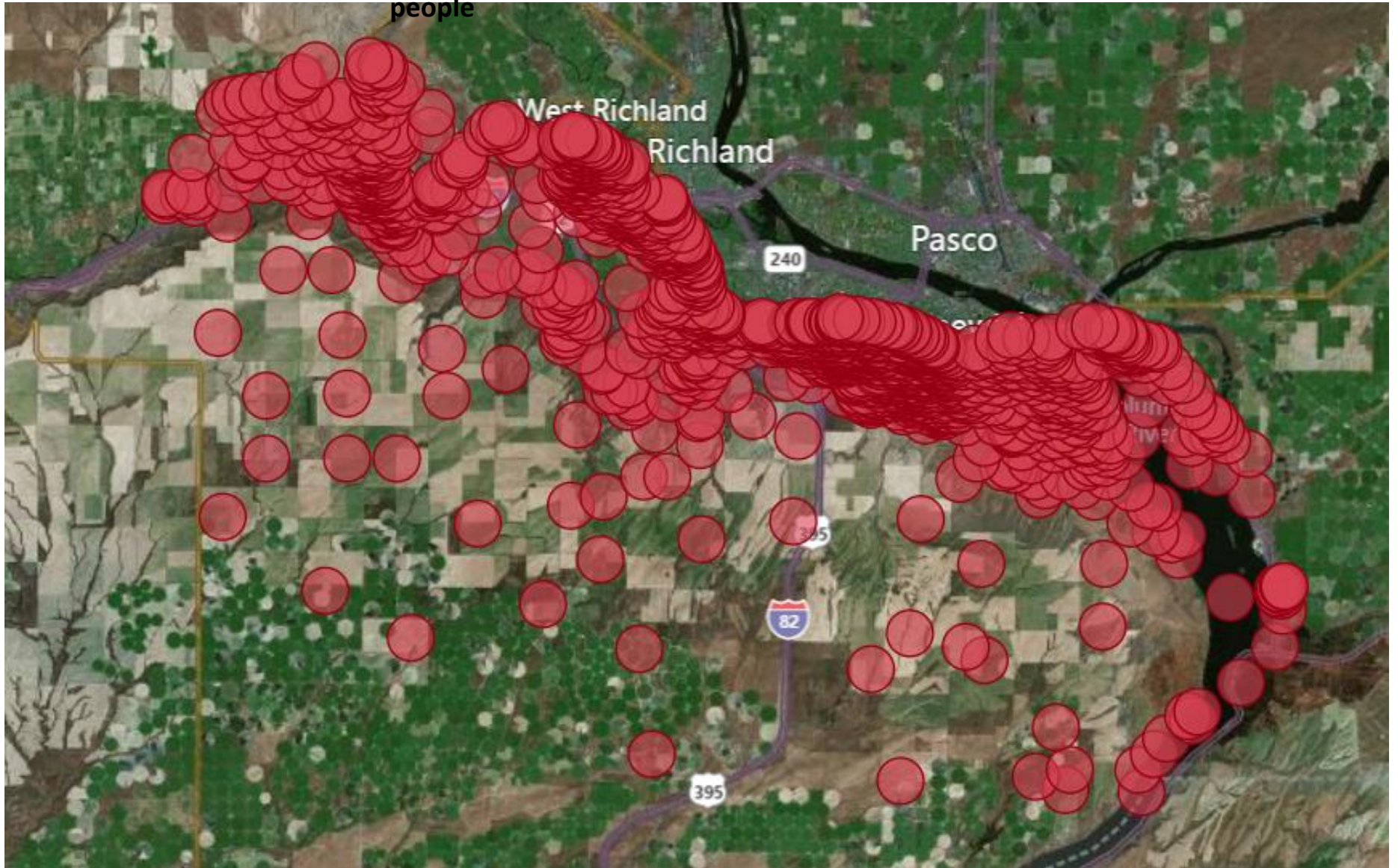


Benton Wind Projects Impacts - 2020 Population 2 to 6 Miles. Compared to 9 Other Counties in (WA)



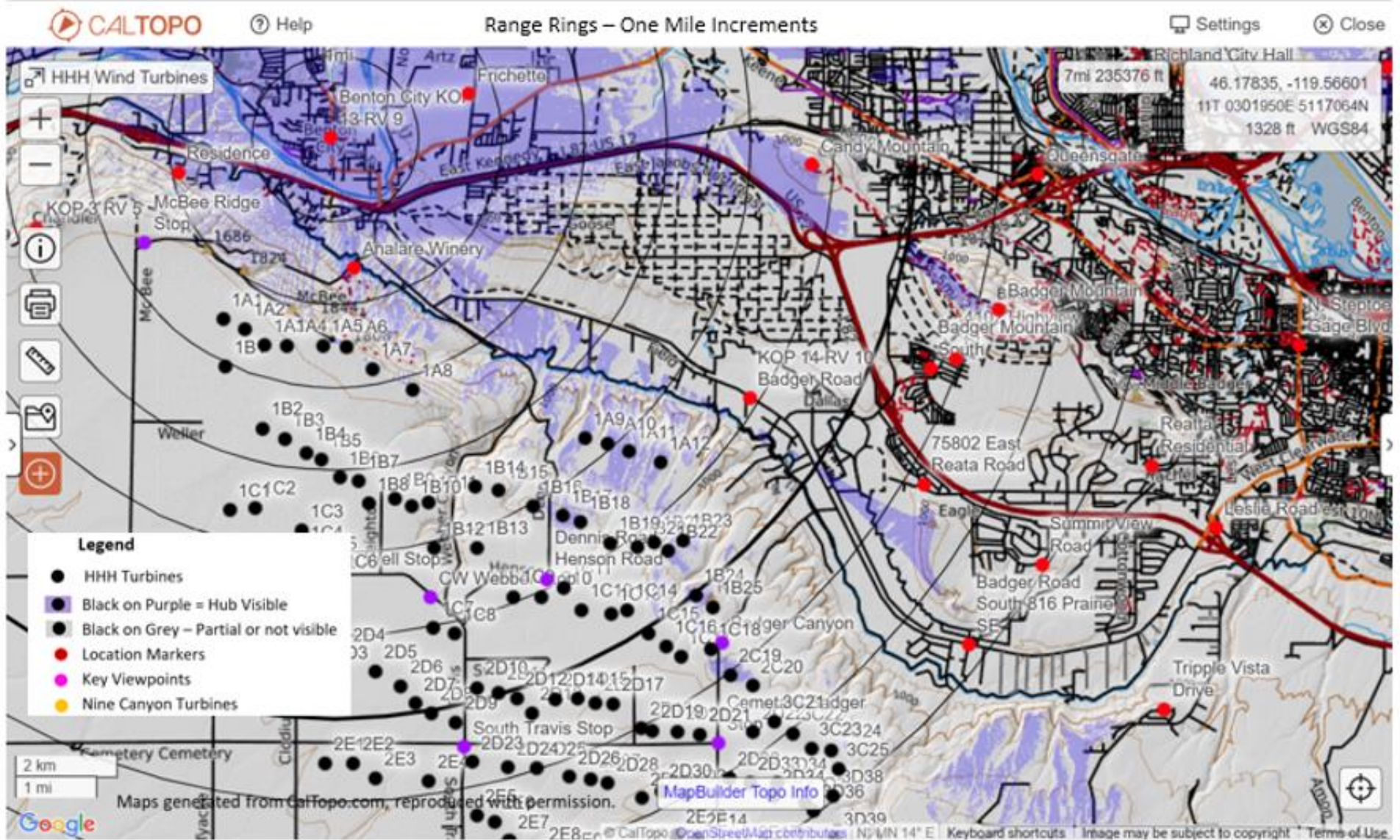


2020 Population USA Census Plots at 6 miles > 100,000 people



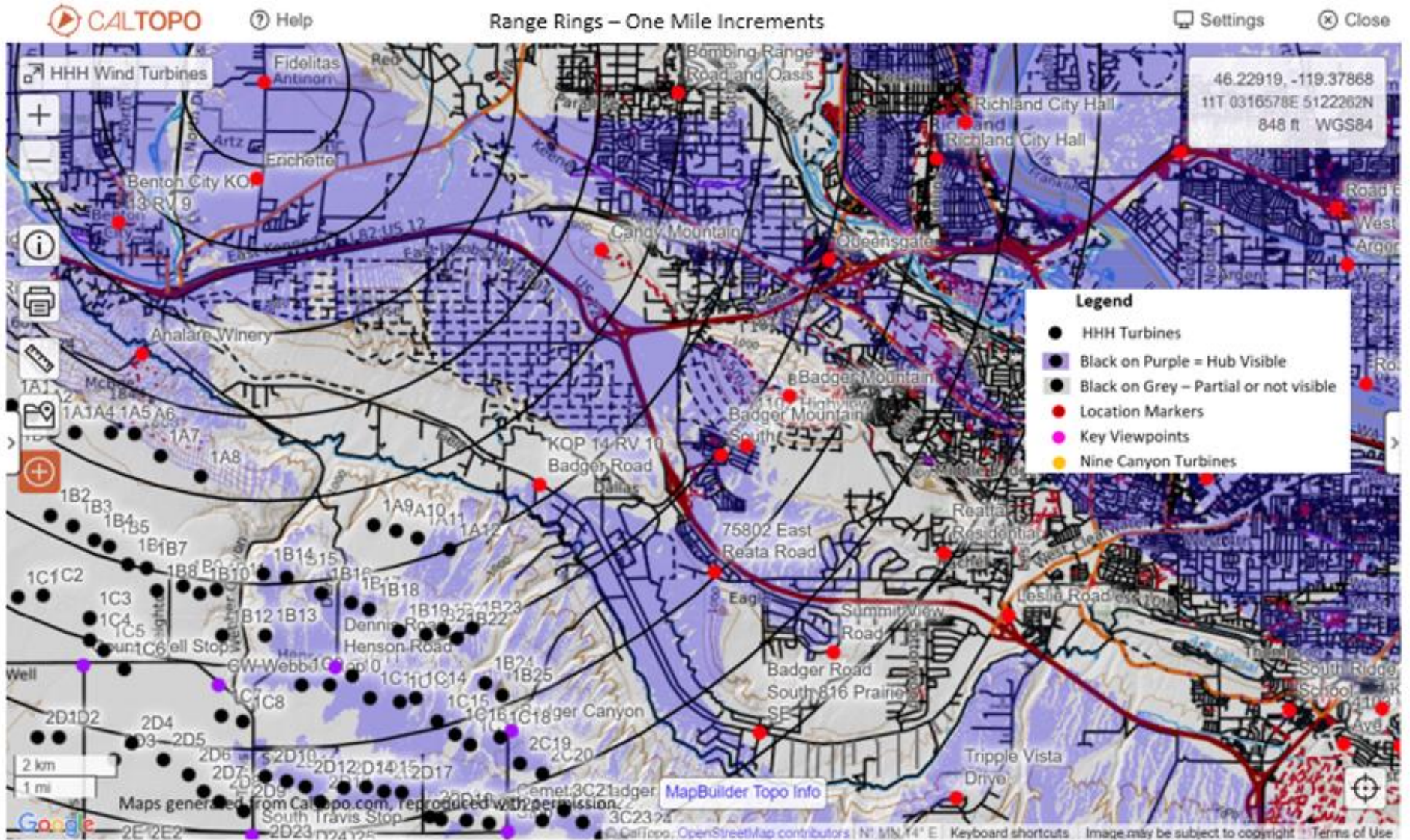


# Benton City Viewshed 499 ft hub height





# Fidelitas Viewshed 499 ft hub height





# Badger Mountain Residences Viewshed 499 ft hub height

