

Tri-Cities C.A.R.E.S.

[Learn More](#) [Take Action](#) [About Us](#) [Projects](#)

[Resources](#) [Contact Us](#)



[Please Donate](#)

Horse Heaven Wind Update

The Future of Tri-Cities is in Jeopardy

[Learn More](#)

*Community Action for
Responsible Environmental
Stewardship*

[Latest News
and
Milestones](#)

**A major decision is going to be made
early next year.**

**If the Governor approves the Horse Heaven Hills
Wind Farm and Solar Project as it is presently
designed, up to 231–499 foot high turbines will be
constructed on the ridgeline of the Horse Heaven
Hills south of Benton City, Kennewick, and Finley.
The turbines will be visible from all over
Benton County.**

**We are in a battle to prevent the Tri-Cities
from being significantly Impacted by the
Horse Heaven Hills wind turbine project**



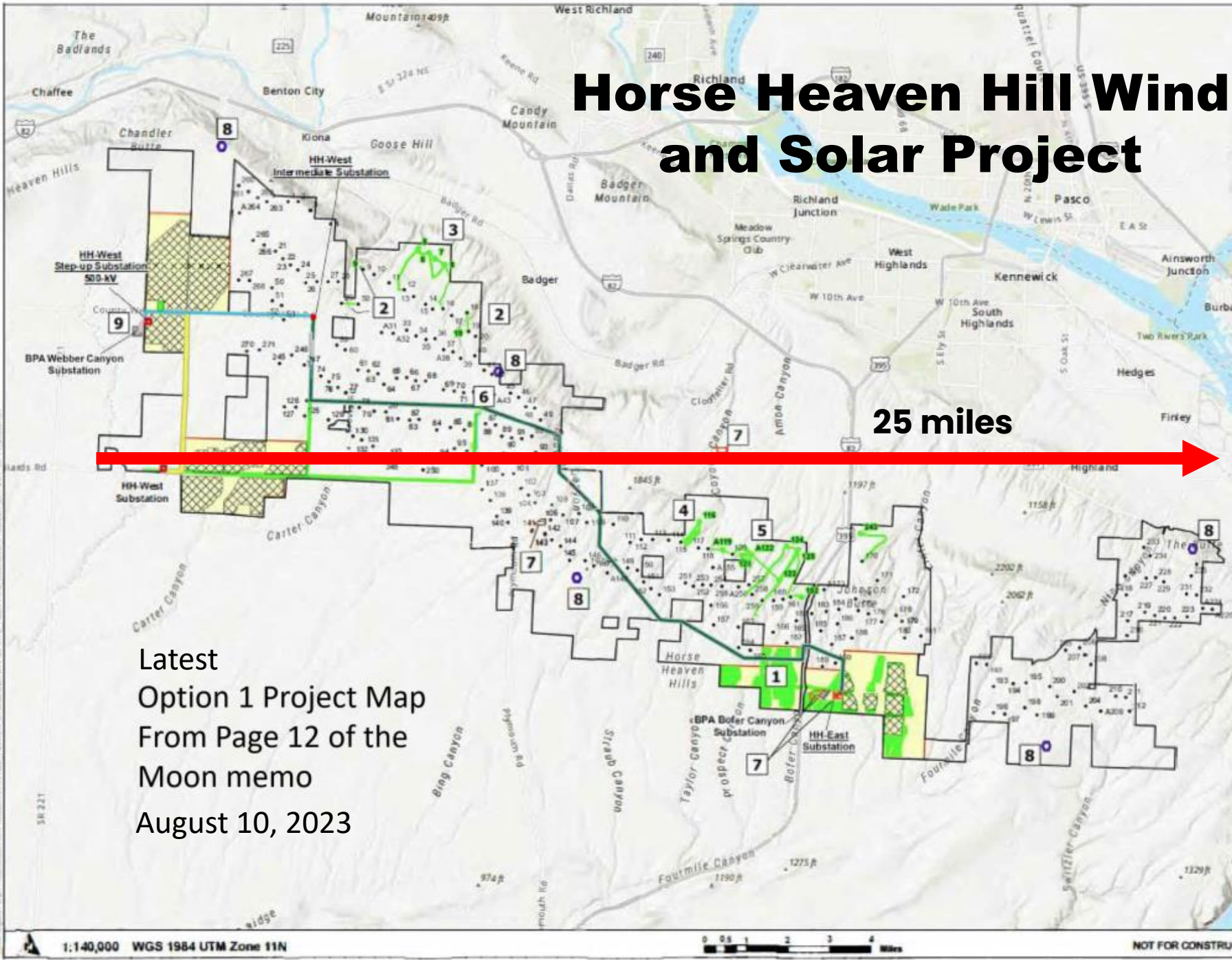
**Tri-Cities CARES
is the only public intervenor**

Horse Heaven Hill Wind and Solar Project

Horse Heaven Wind Project



Overview Map
Turbine Layout Option 1
BENTON COUNTY, WA



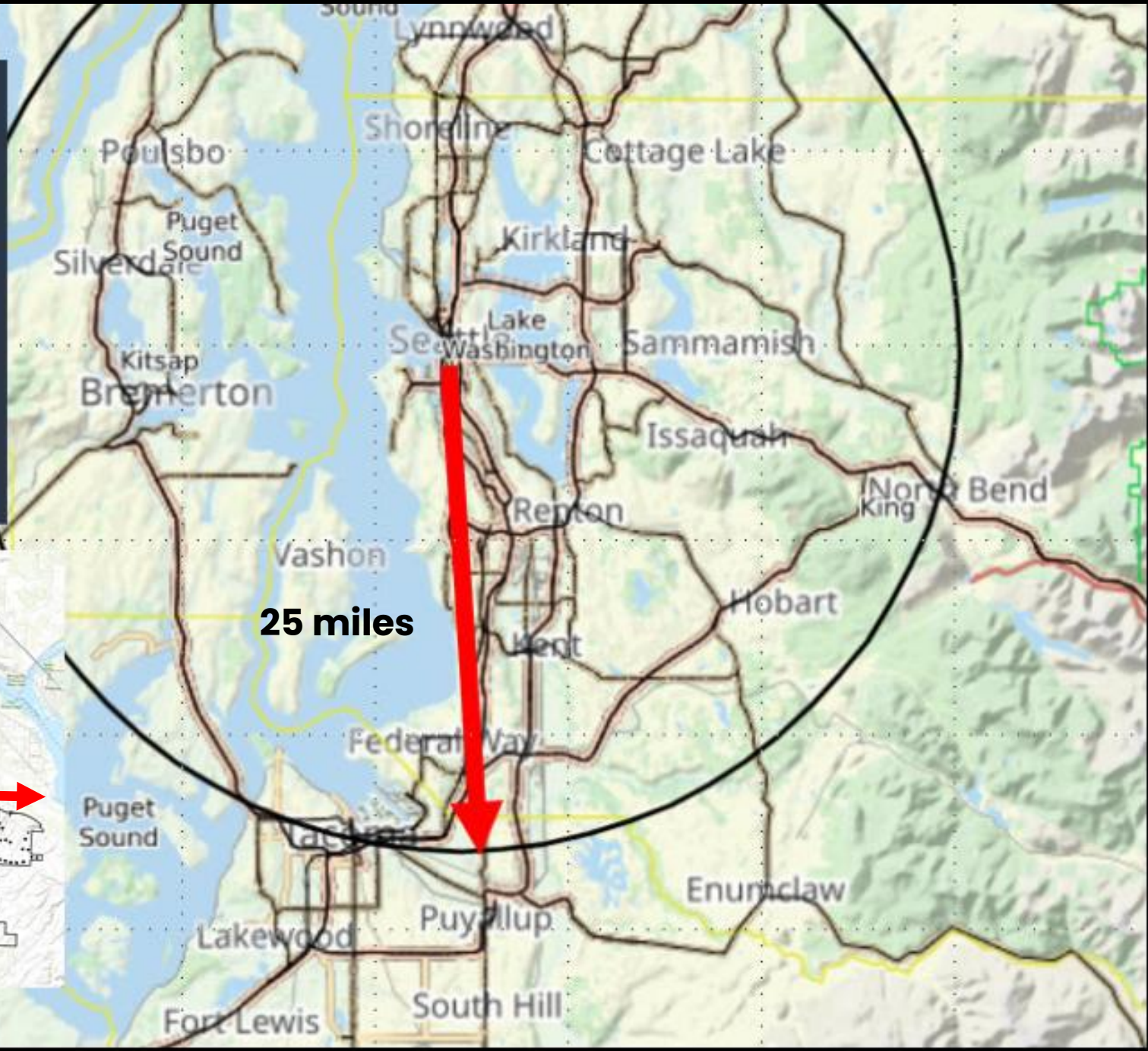
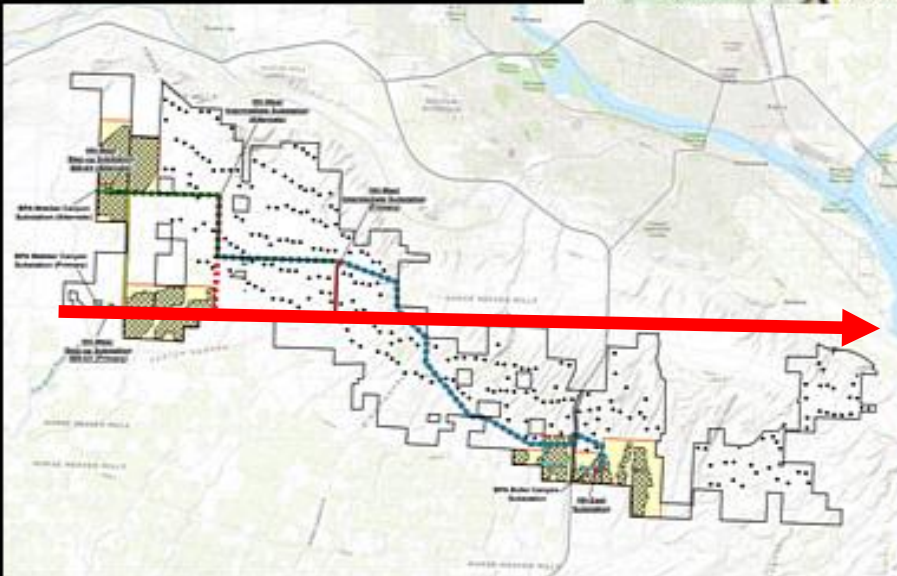
25 miles west to east and 4 to 6 miles wide north to south, goes from Benton City all the way to Finley.

Same distance as:

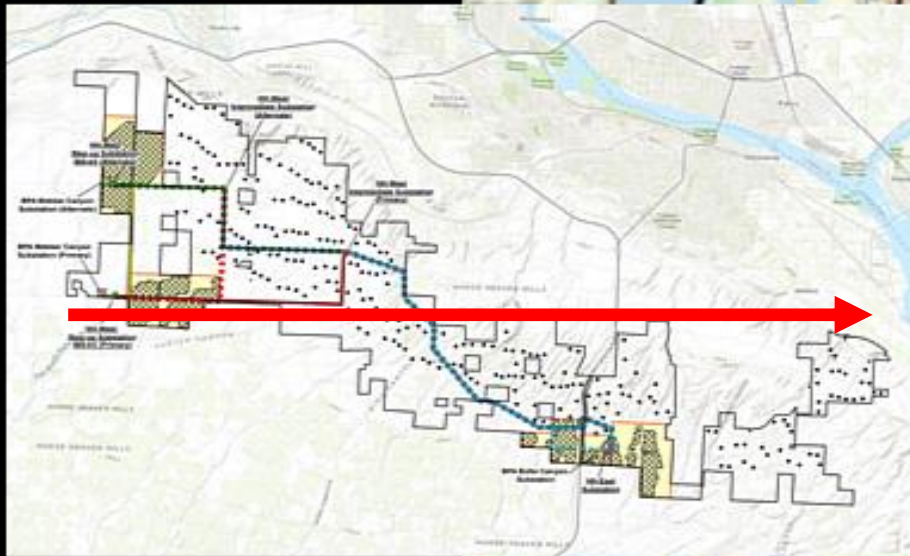
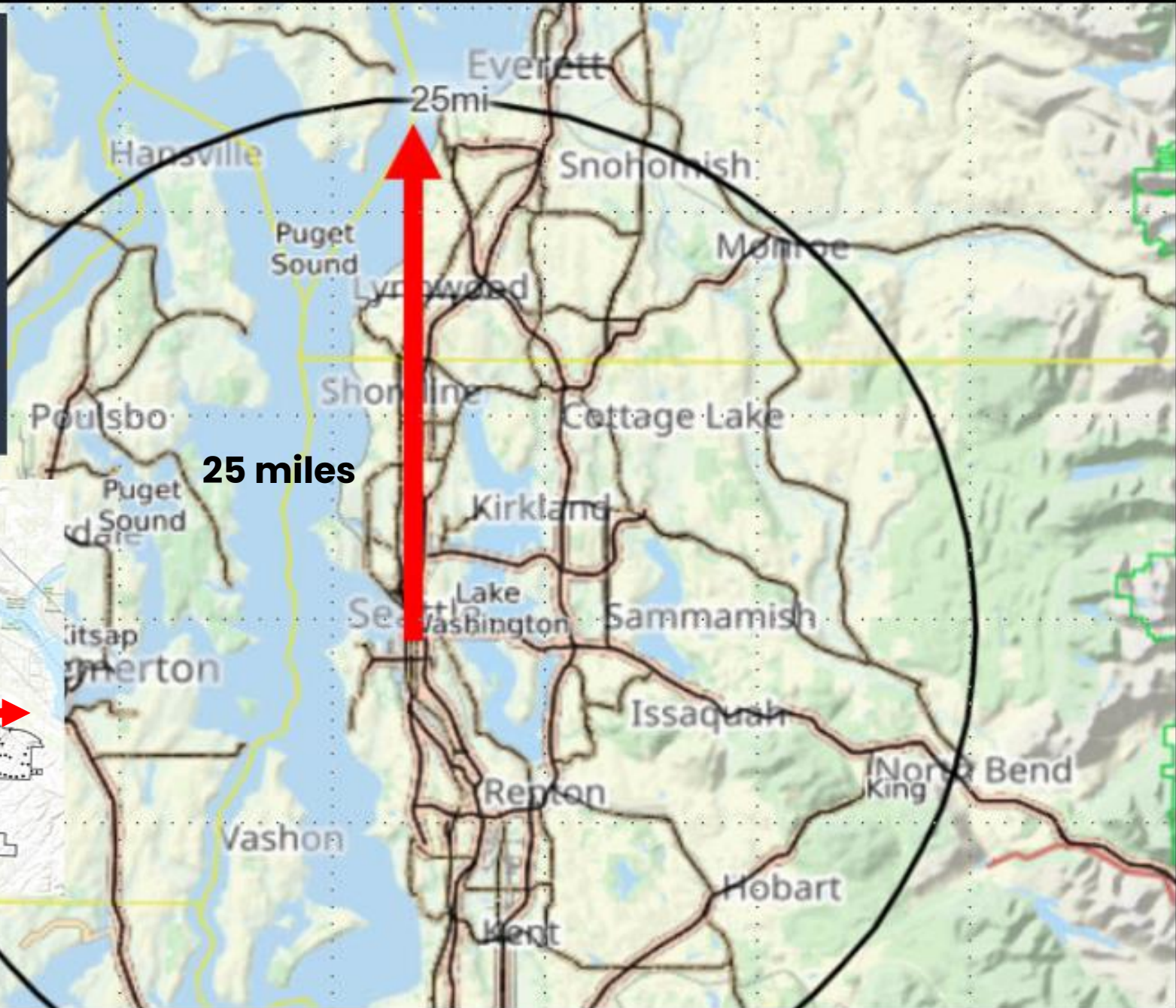
- **Seattle to North Bend**
- **Seattle to Tacoma**
- **Seattle to Everett.**

Latest
Option 1 Project Map
From Page 12 of the
Moon memo
August 10, 2023

Seattle to Tacoma

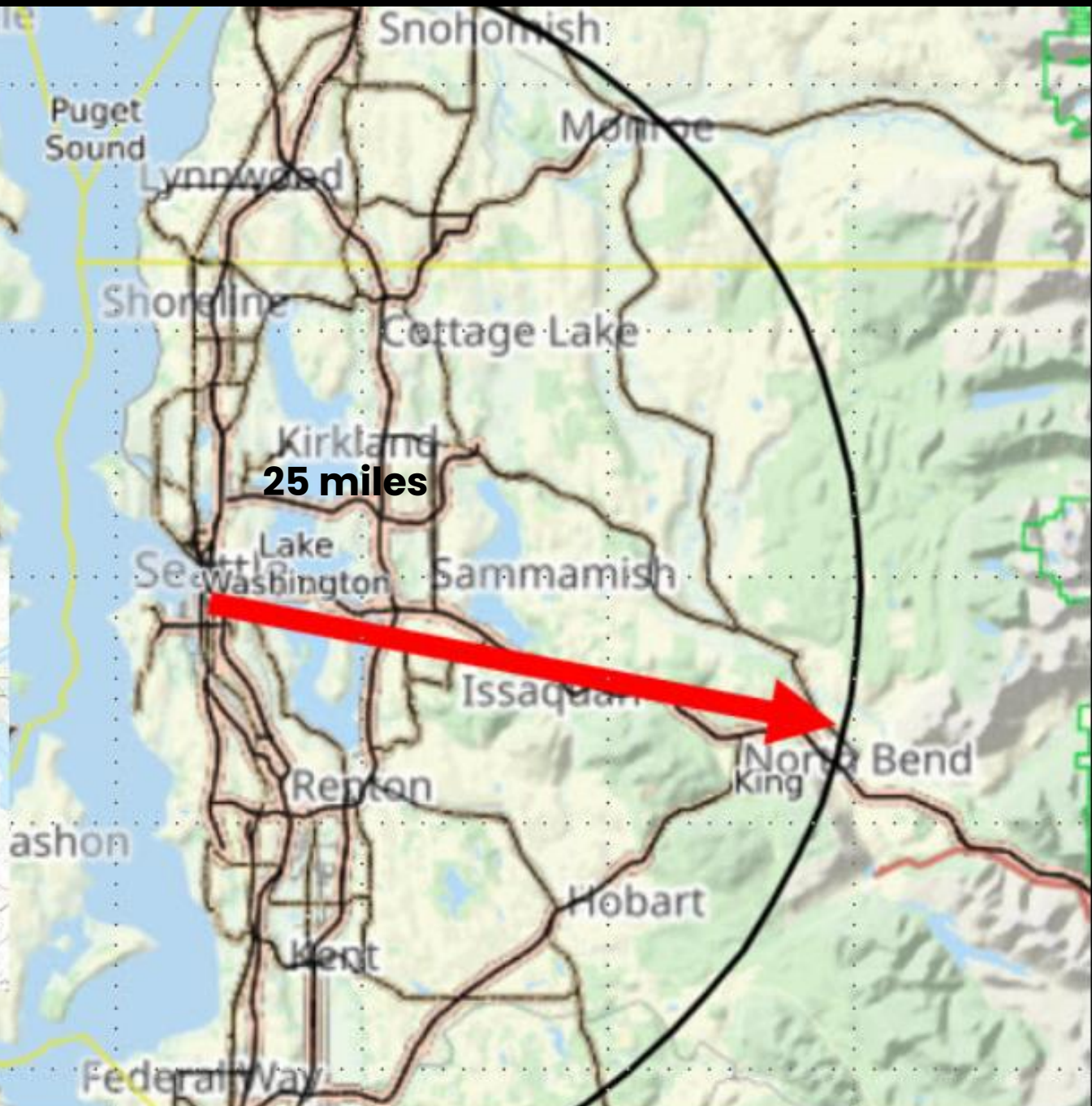
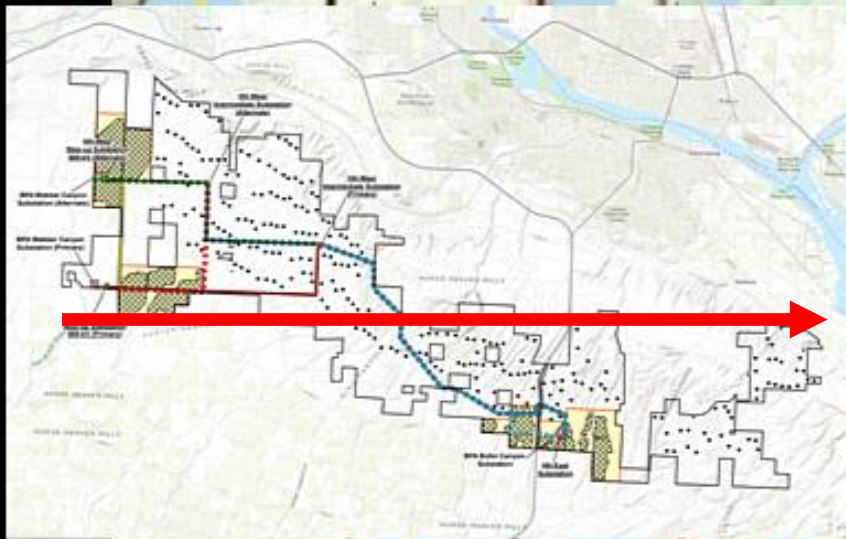


Seattle to Everett

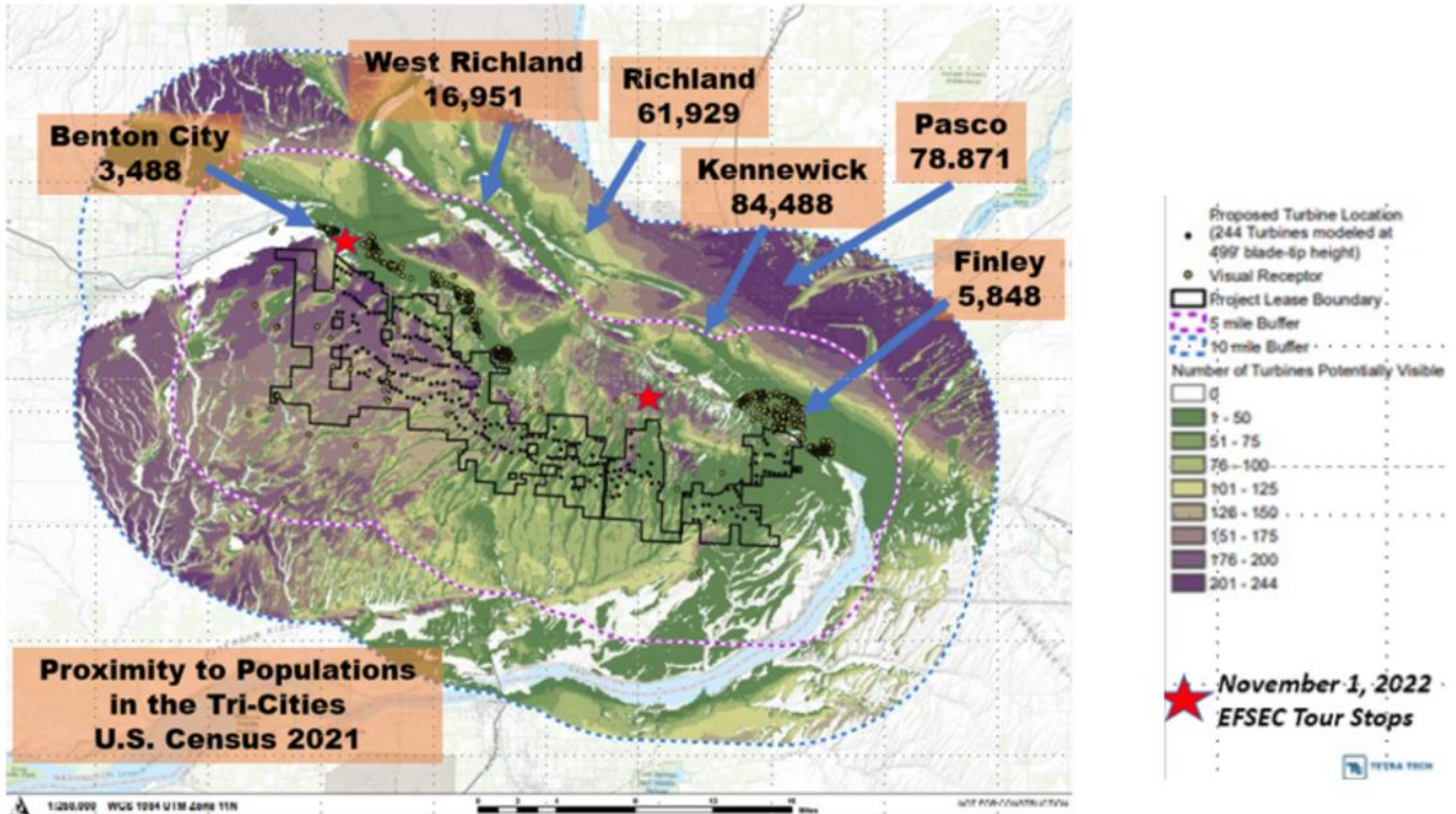


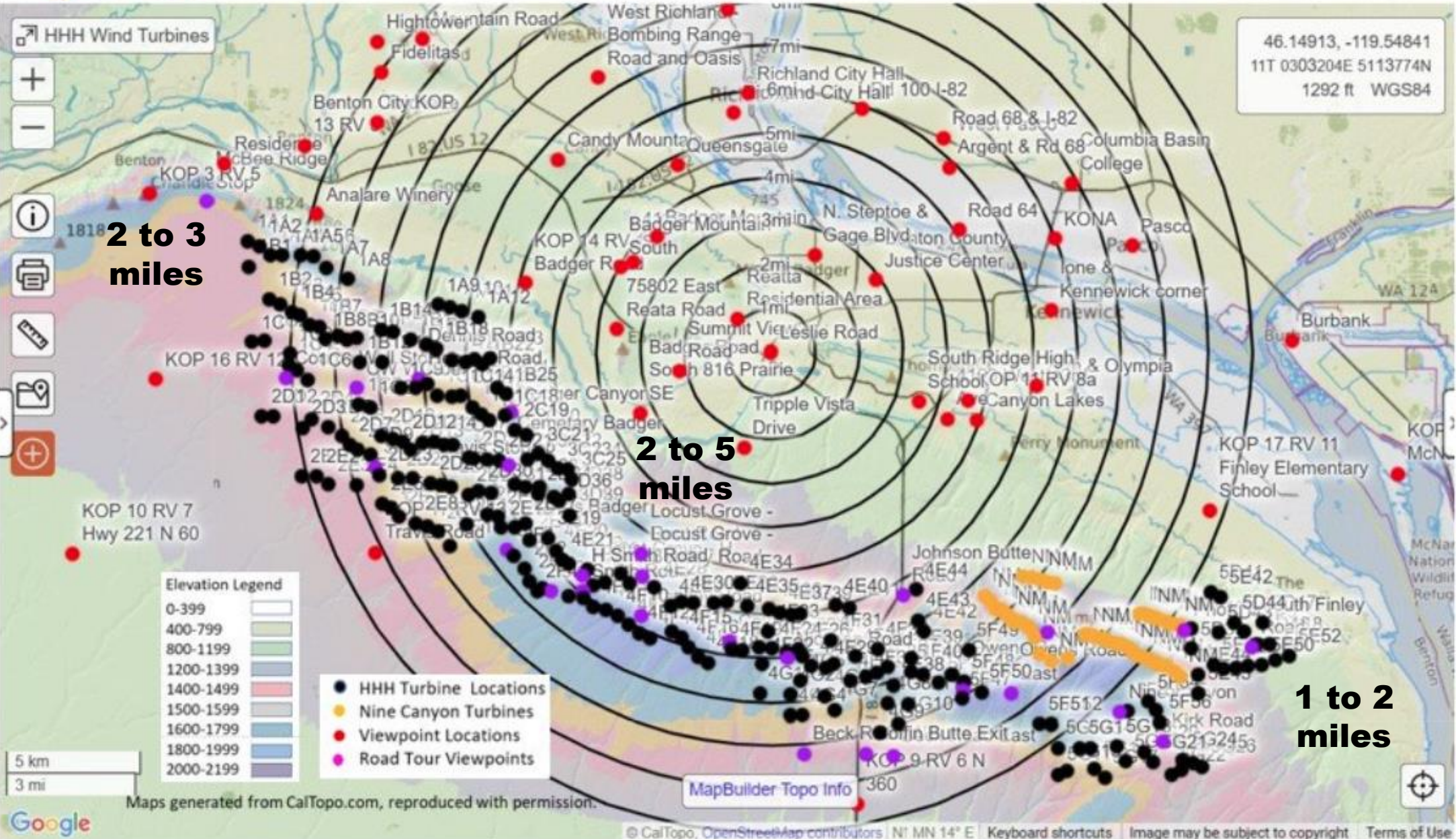
Seattle to North Bend

25 miles



Over 300,000 people will be affected





2 to 3 miles

2 to 5 miles

1 to 2 miles

Elevation Legend

0-399	[Lightest Green]
400-799	[Light Green]
800-1199	[Medium Green]
1200-1399	[Dark Green]
1400-1499	[Light Blue]
1500-1599	[Medium Blue]
1600-1799	[Dark Blue]
1800-1999	[Light Purple]
2000-2199	[Dark Purple]

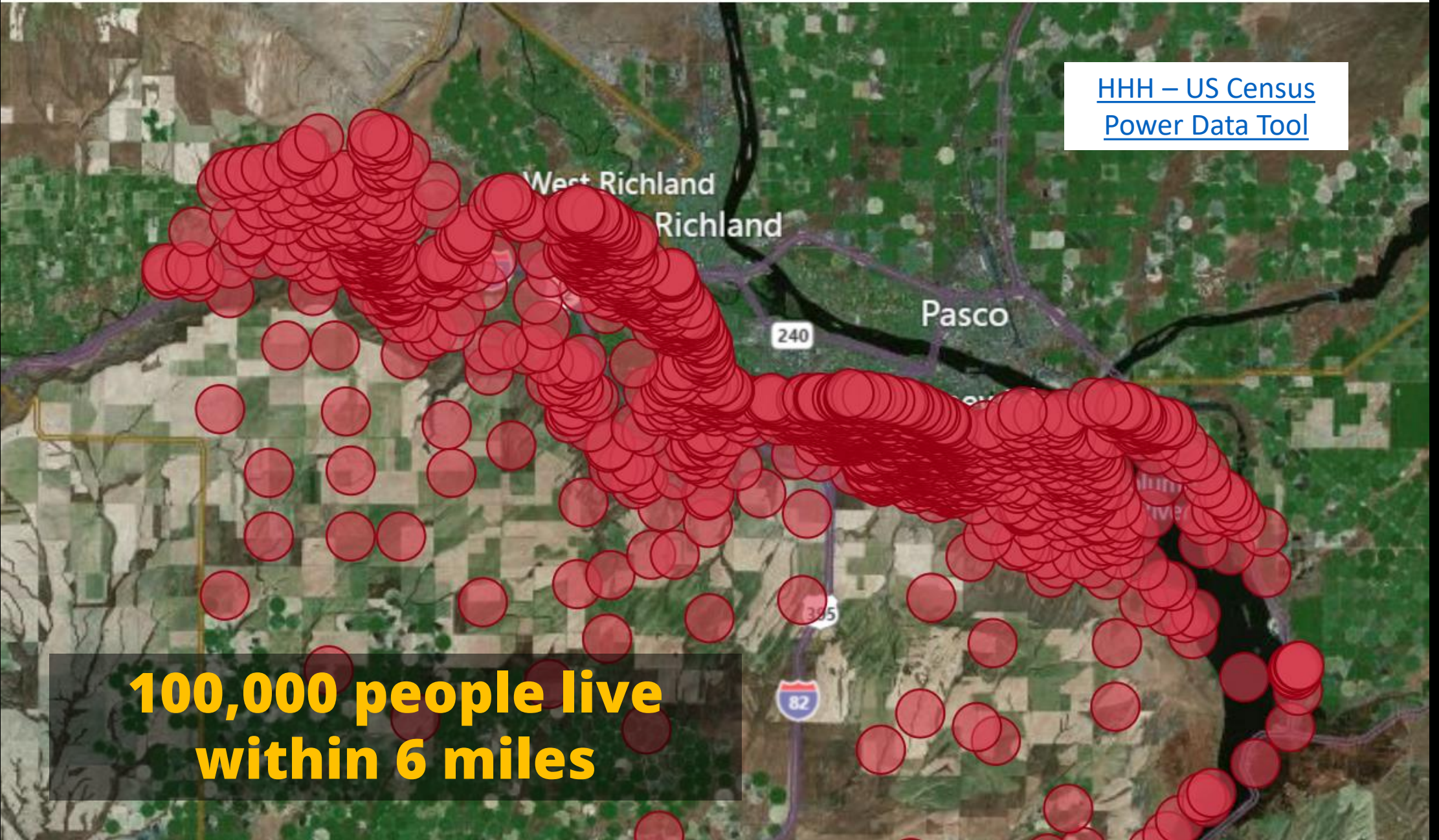
- HHH Turbine Locations
- Nine Canyon Turbines
- Viewpoint Locations
- Road Tour Viewpoints

MapBuilder Topo Info

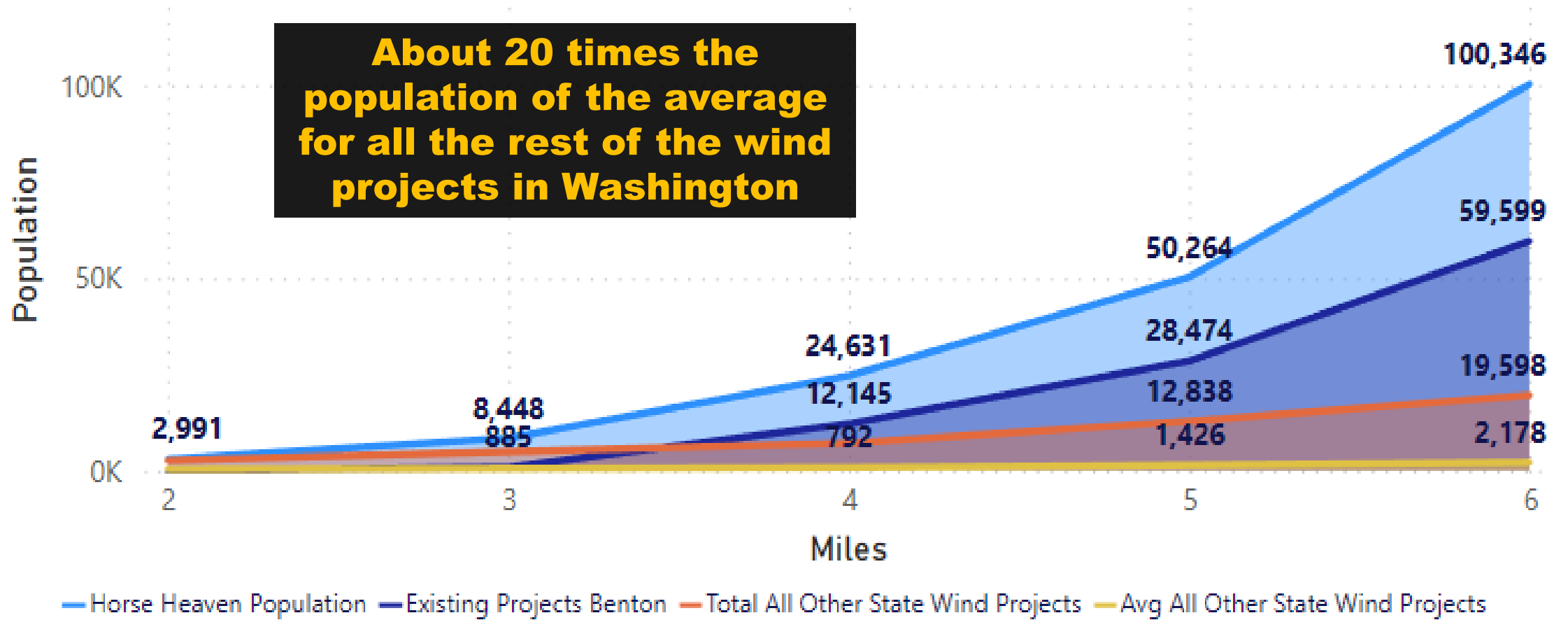
Maps generated from CalTopo.com, reproduced with permission.

[HHH – US Census
Power Data Tool](#)

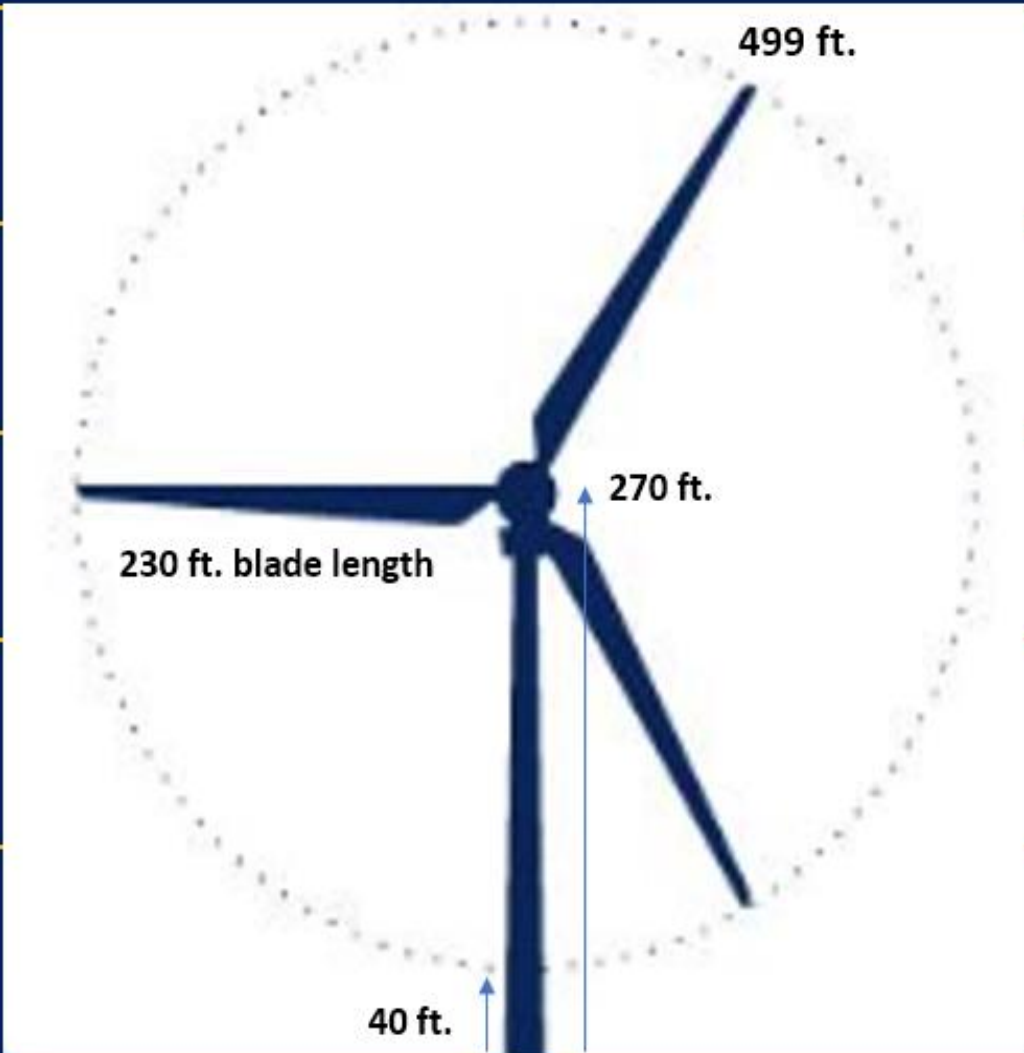
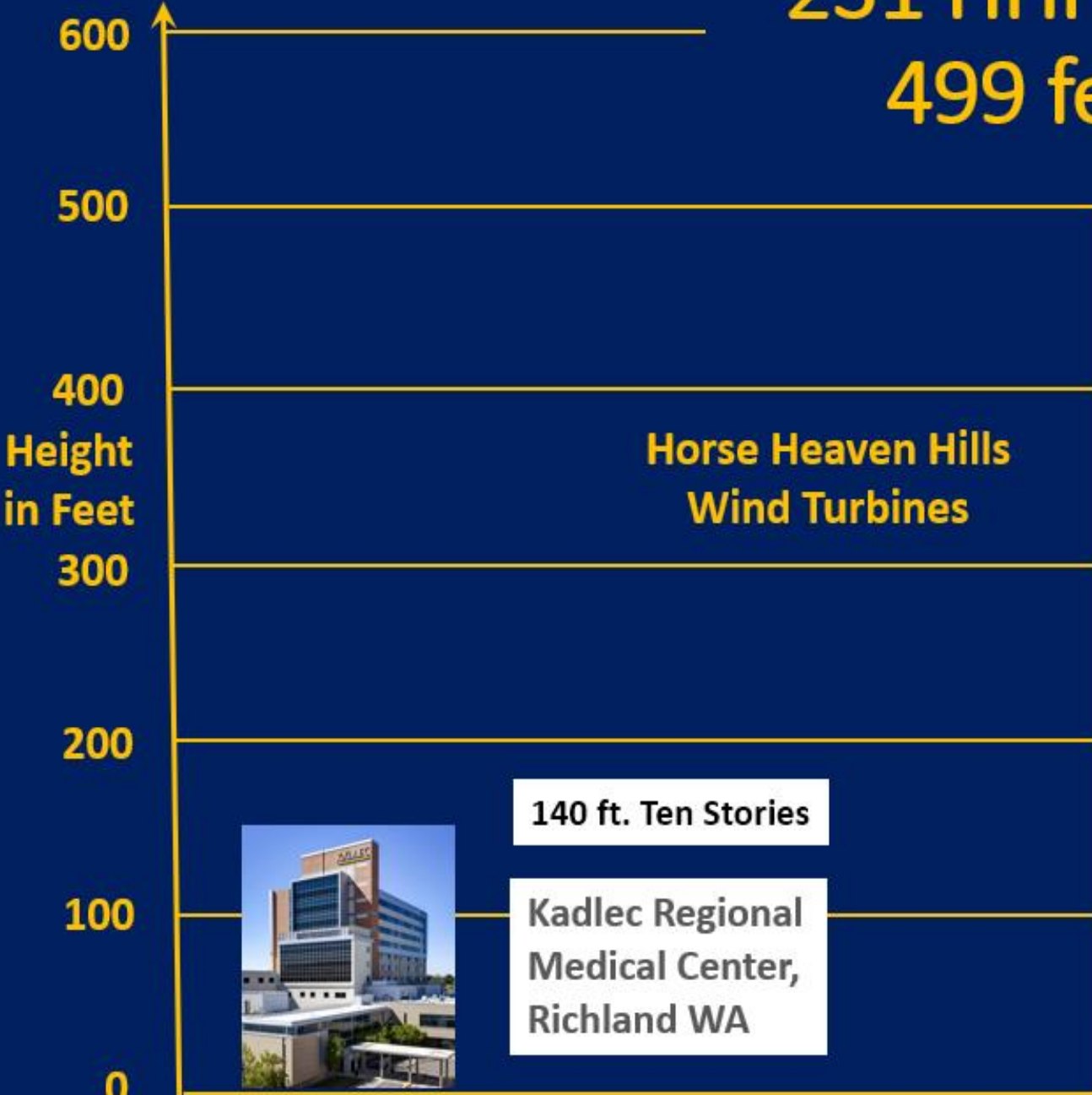
**100,000 people live
within 6 miles**



Benton Wind Projects Impacts - 2020 Population 2 to 6 Miles. Compared to 9 Other Counties in (WA)



231 HHH Wind Turbines 499 feet high each



Key Events & Milestones

- ✓ Dec 6, 2022 ADLS Proposal to Rep April Connor and Rep Mark Klicker
- ✓ Dec 19, 2022 2,000 page DEIS published -- Surprise Un-announced ASC Update
- ✓ Feb 1, 2023 DEIS Comments submitted to EFSEC - 2,430 public comments
- ✓ Mar 10, 2023 TCC approved as an Intervenor in Adjudication
- ✓ Mar 28, 2023 Kathleen Drew EFSEC Chair – denies live hearings in Tri-Cities
- ✓ May 9, 2019 ADLS Bill Signed by the Governor.
- ✓ June 12 to present Adjudication / Testimony / Virtual Hearings /Cross Examination
- **September 2023?** **Adjudication Over?**
- **November 2023?** **FEIS Released?**
- **January 2024?** **EFSEC Recommendation? / Governor's Decision ?**
- **February 2024?** **Lawsuits filed to go the Washington Supreme Court**

Grain Elevator
Kennewick

Combine Hills Projects

Walmart
Kennewick

Radio Tower on American Hill
WA 397 & S Finley Rd

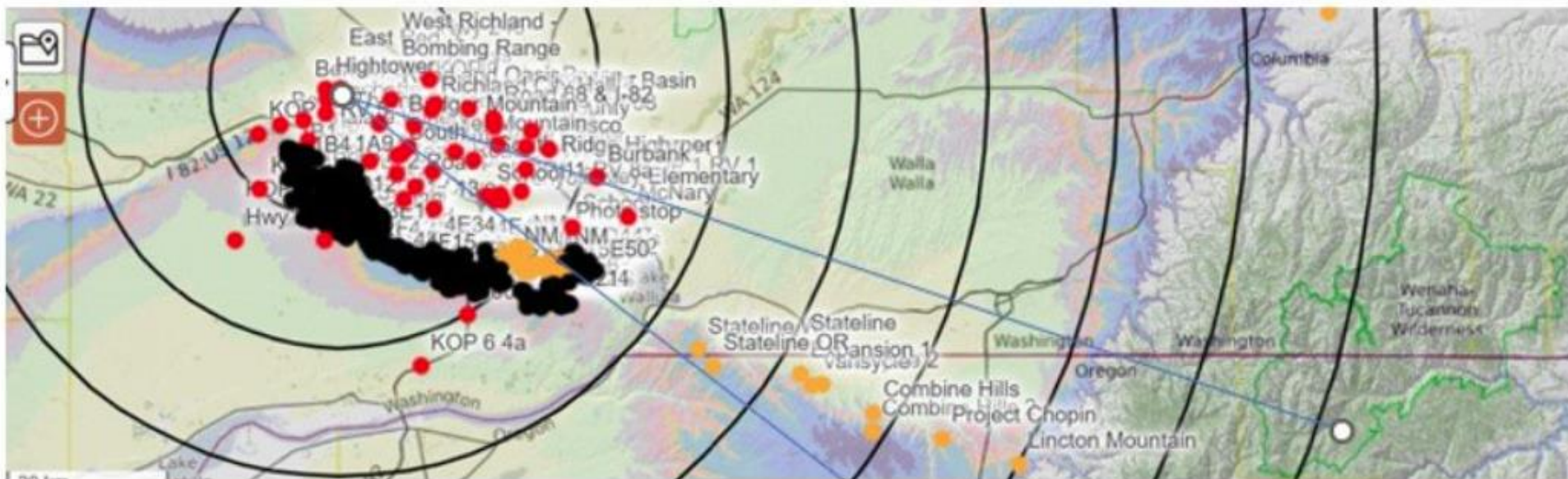
Thompson Hill
Kennewick

Stateline Projects



West Richland in Shadow

Photo courtesy of Elliott Aholo.



ADLS SHB 1173

- December 6, 2022 - TCC Proposal to Rep. April Connors & Rep. Mark Klicker
- January 6, 2023 – House Bill 1173 Pre-filed for introduction
- February 16, 2023 - Hearing in the House Environmental & Energy Committee.
- February 27, 2023 - House passed HB 1173 on a vote of 94 to 1.
- March 17, 2023 – Hearing in the Senate Committee on Environment, Energy & Technology
- April 8, 2023 - Senate passed SHB 1173 on a vote of 84 to 1.
- May 9, 2023 – Signed into Law by Governor Inslee.

Safe Skies Can Be Dark Skies

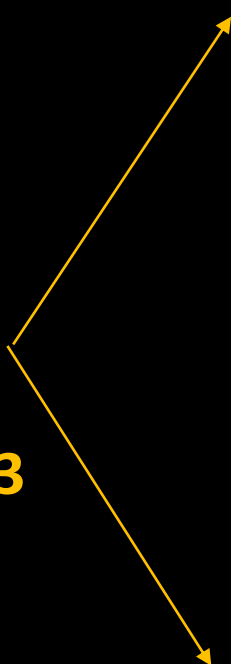


The ALJ's Hurdle – TCC's Ability to Speak for the Community at Large

In Judge Torem's Preliminary Hearing Order # 2 Order states:

“Any party wishing to present witness(es) on “Local Concerns, Attitudes and Opinions” should *justify the witness' significance as a representative of the local area and ability to speak for the community-at-large* and understand they will be subject to cross-examination. This category is not public comment that will be heard per RCW 80.50.090(4).”

**What We
Achieved &
Submitted as
Testimony
On June 12, 2023**



- Tri-City Herald article on HHH Wind Turbine Project January 17, 2023
- Tri-City Herald article on Wind Turbines – ADLS Bill March 15, 2023
- Tri-City Herald article on Gov Inslee signing the ADLS Bill May 10, 2023
- Tri-City Herald Editorial Board Opinion May 17, 2023
- Visit Tri-Cities Washington letter
- Richland City Council Resolution No. 2023-76
- Tri-City Regional Chamber of Commerce letter
- Lower Columbia Basin Audubon Society Letter
- Tri-City Board of Realtors Letter
- Regional Caucus State Legislators Letter to EFSEC June 12, 2023



[Home](#) » [News](#) »



Commissioners Oppose Wind Farm Project

Posted on Thursday September 14, 2023

This week, the Benton County Commissioners formally expressed their opposition to the Horse Heaven Wind Farm Project.

Kennewick, WA – On Tuesday September 12th, the Benton County Commissioners passed a [resolution](#) formally opposing the Horse Heaven Wind Farm Project. First proposed by Scout Clean Energy LLC in June 2021, the project area would run roughly 29 miles in unincorporated Benton County from Benton City to the Finley area.



Subscribe

Is this the future?

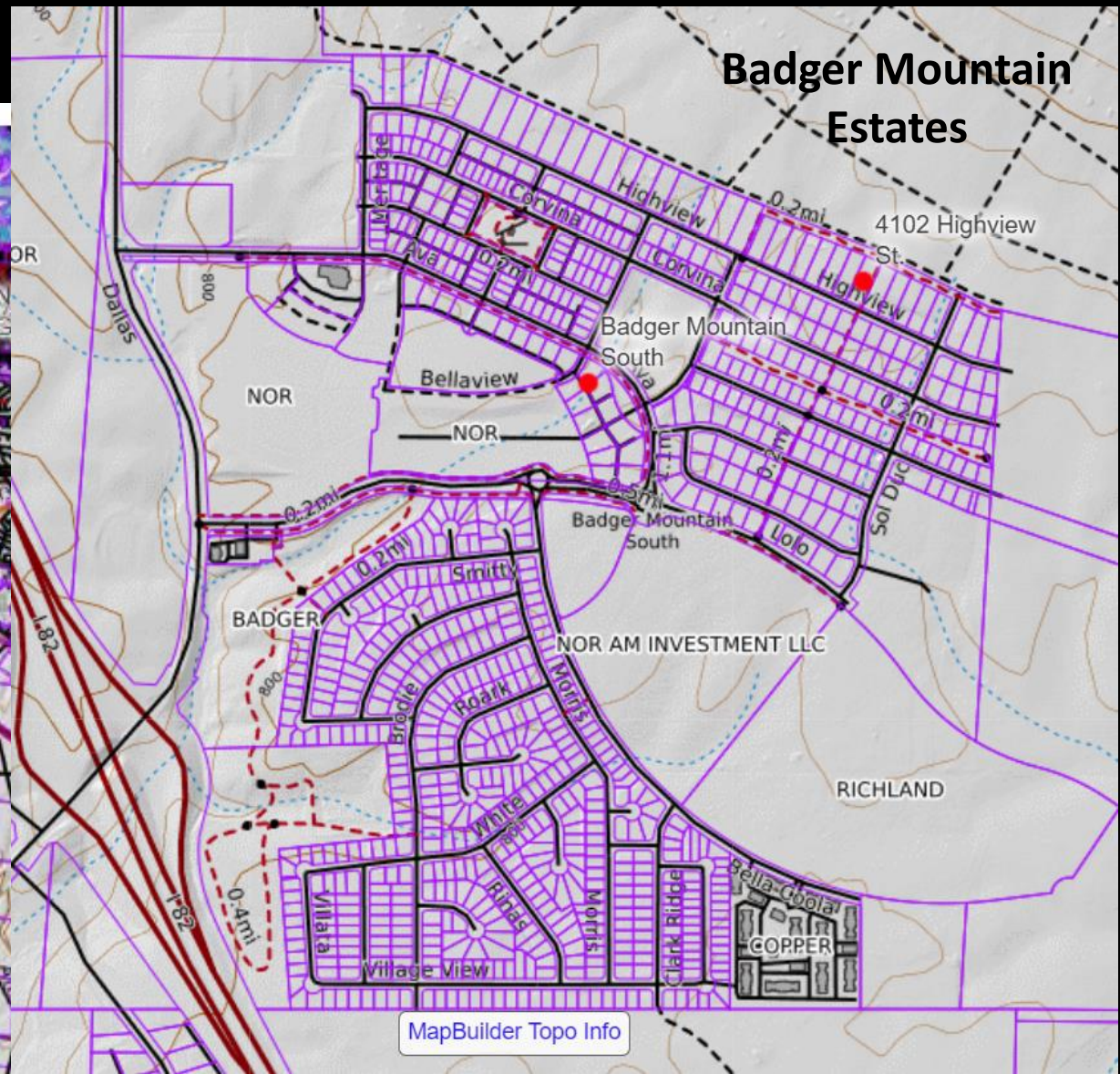
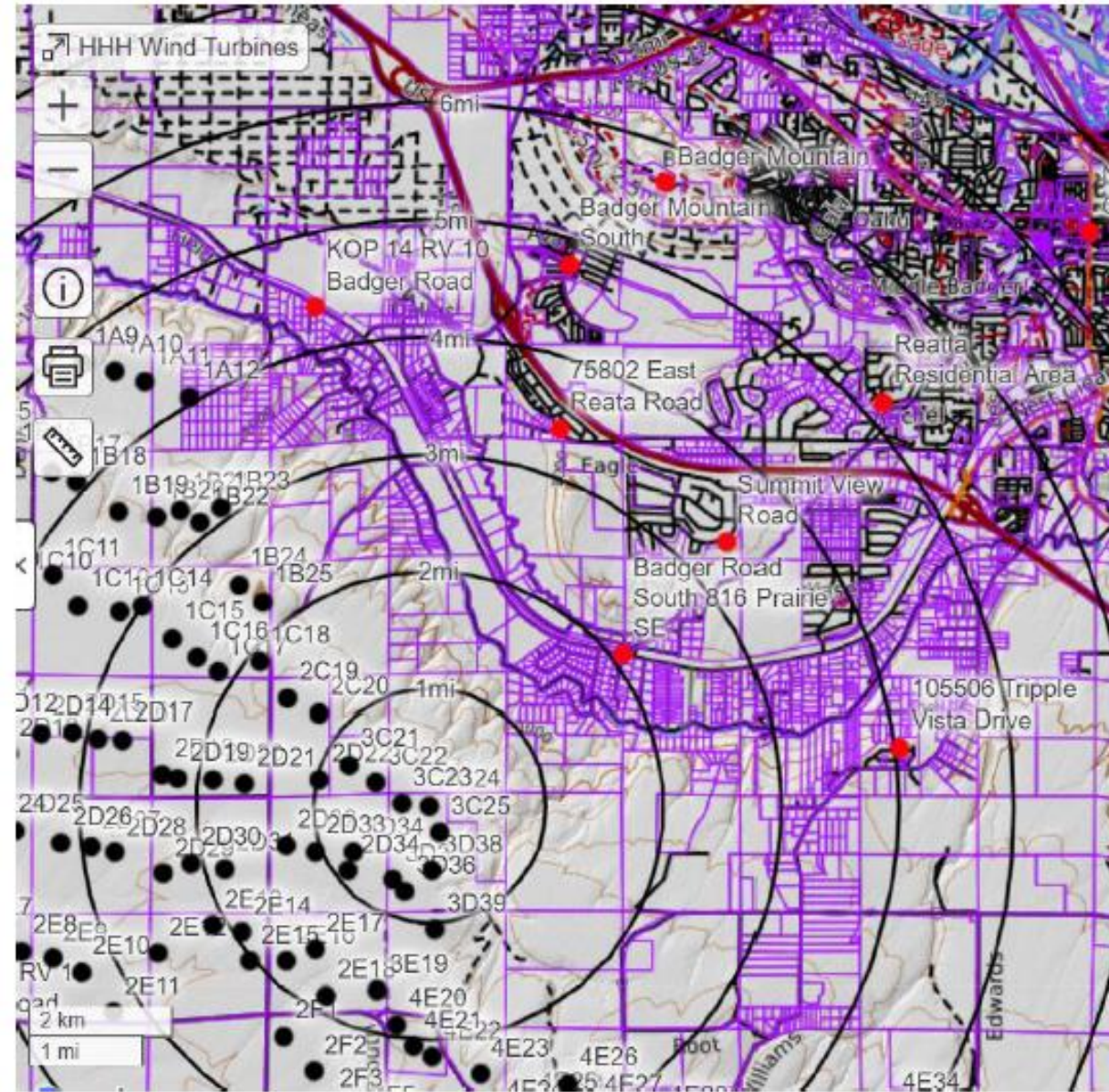


Visual and property appraisal experts warn of 10 to 30 percent reductions in property values that will threaten the future growth and development of the entire region.



\$ 700K to \$1 Million Properties – Thousands of homes and businesses in numerous residential communities.

Ownership Plots



Property Value & Real Estate Impacts



The following pages show what the project will look like from key representative viewpoints in the Tri-Cities.

Anelare Winery - BLM Kiosk – McBee Grade Road

May 25, 2023



Google Earth Pro
Computer Simulation



Benton City - RV9

May 5, 2023



TCC Google Earth Pro
Computer Simulation



Fidelitas Winery – Sunset Road - Red Mountain

September 6, 2023



TCC Google Earth Pro
Computer Simulation



Badger Mountain South – Dallas Road – I-82

May 24, 2023



Google Earth Pro Computer Simulation



Top of Badger Mountain - RV 5

April 22, 2023



TCC Google Earth Pro
Computer Simulation



Badger Canyon Road - RV 10

May 24, 2023



TCC Google Earth Pro
Computer Simulation



Summitview Residences South Kennewick

September 5, 2023 8 AM



Google Earth Pro
Computer Simulation



Thompson Hill Residences Kennewick Bob Adams Parkway

September 6, 2023



TCC Google Earth Pro
Computer Simulation



Canyon Lakes Community Kennewick

September 6, 2023



TCC Google Earth Pro
Computer Simulation



Interstate 82 – Highway 395 Intersection, South of Kennewick

September 6, 2023



TCC Google Earth Pro
Computer Simulation



Tripple Vista – Clodfelter & Locust Grove Kennewick

September 7, 2023



TCC Google Earth Pro
Computer Simulation



Finley Elementary School in Finley

May 25, 2023



TCC Google Earth Pro
Computer Simulation



Dust, traffic, water issues, recreation impacts

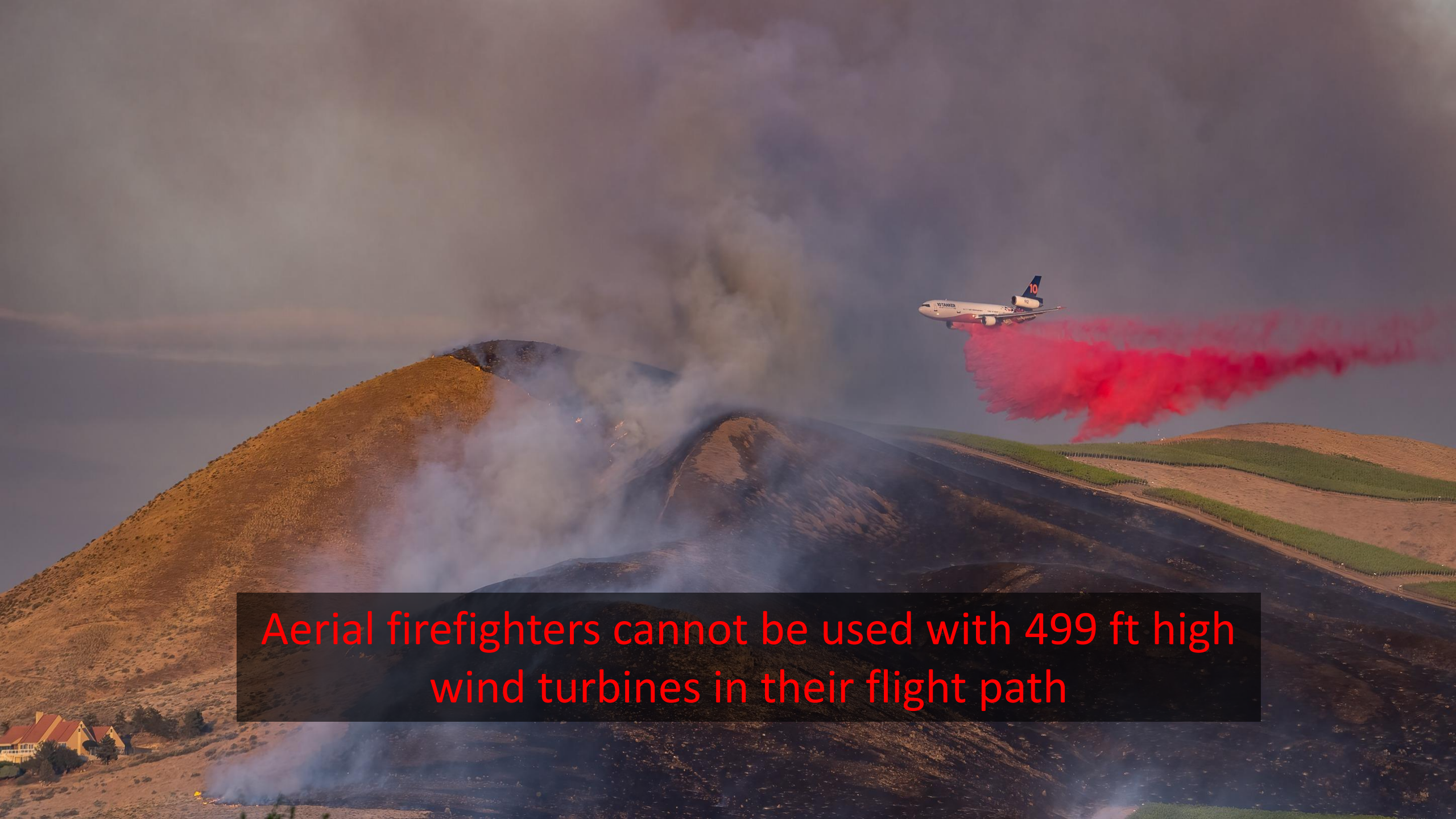


Aerial fire fighting experts indicate that the turbines are a 25 mile long “no-fly zone” that will seriously hinder the ability to protect the property and people adjacent to the project.

June 16, 2023

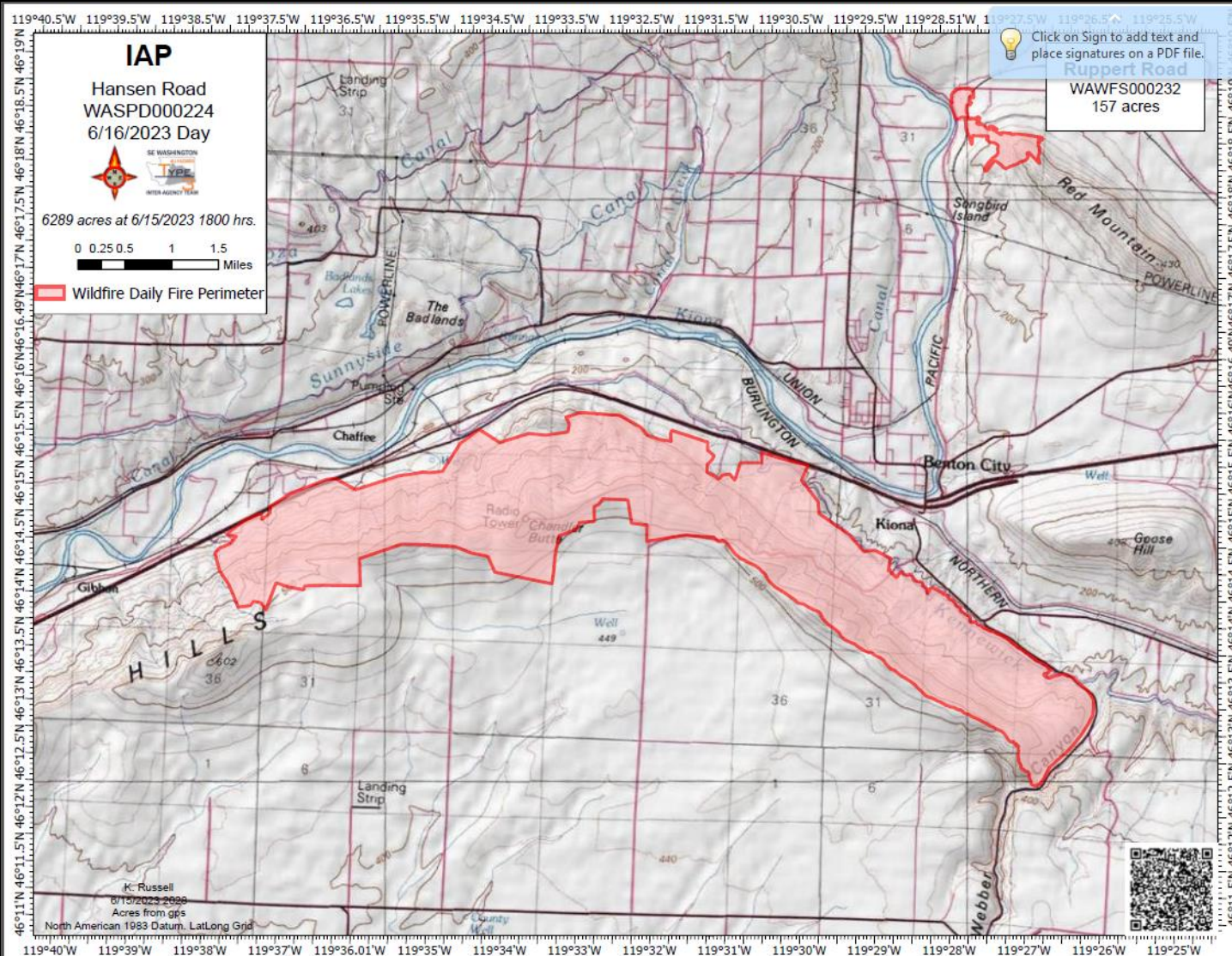
Fire





Aerial firefighters cannot be used with 499 ft high wind turbines in their flight path

Fire Fighting Map & Guidance from Benton County Fire



Minimum Drop Heights for Airtankers and Water Scoopers

- SEAT/Amphibious SEAT = 60' (optimum 90') above the vegetation
- LAT = 150' above the vegetation
- VLAT = 200' above the vegetation
- Water Scooper (CL 215/415) = 150' above the vegetation

ATGS = Air Tactical Group Supervisor

ASM/LP = Aerial Supervision Module/Lead Plane

Type 3 Airtanker = 800-1,799 gallons (S-2T, SEAT)

Type 2 Airtanker = 1,800-2,999 gallons
(Convair 580, Q-400)

Type 1 or Large Airtanker (LAT) = 3,000-5,000 gallons
(BAe-146, RJ85, MD87, C-130)

VLAT = Very Large Airtanker = >8,000 gallons (DC10, 747)

HHH Wind Turbines



46.05954, -118.87552
11T 0354931E 5102373N
343 ft WGS84

**USGS Contours
with four mile
airspace protection
setback**

5 km
3 mi

MapBuilder Topo Info 20° 40° 55° 60° 07-11 12-16 17-2022





**Can We Preserve The Natural View We Have Today?
What Will Tri-Cities Look Like?
Will EFSEC even consider reasonable alternatives?**



Scout Proposal

Horse Heaven
Wind Project



Overview Map
Turbine Layout Option 1
BENTON COUNTY, WA

- Project Lease Boundary
- Option 1 Turbine Layout
- 230-kV Interfe Transmission Line
- County Well Road 500-kV Transmission Line
- Solar Interfe 500-kV Transmission Line
- County Well Road 500-kV Transmission
- Project Substation
- BPA Substation
- Solar Array
- Solar Siting Area
- Laydown Yard
- Radar Tower
- Features Removed from Current Design



Reference Map



Option 1 Project Map
From Page 12 of the
Moon memo

1:140,000 WGS 1984 UTM Zone 11N

0 0.5 1 2 3 4 Miles

NOT FOR CONSTRUCTION

TCC Visual Expert Alternative Proposal

Horse Heaven
Wind Project



Overview Map
Turbine Layout Option 1
BENTON COUNTY, WA

- Project Lease Boundary
- Option 1 Turbine Layout
- 230-kV Interline Transmission Line
- County Well Road 500-kV Transmission Line
- Solar Interline 500-kV Transmission Line
- County Well Road 500-kV Transmission
- Project Substation
- BPA Substation
- Solar Array
- Solar Siting Area
- Laydown Yard
- Radar Tower
- Features Removed from Current Design



Reference Map



Visual Analysis showing Turbines
with Low Impact on Visibility
Option 1 Project Map page 12 of
the Moon memo

Will EFSEC even consider a reasonable alternative?

Horse Heaven
Wind Project



Overview Map
Turbine Layout Option 1
BENTON COUNTY, WA

- Project Lease Boundary
- Option 1 Turbine Layout
- 230-kV Interline Transmission Line
- County Well Road 500-kV Transmission Line
- Solar Interline 500-kV Transmission Line
- County Well Road 500-kV Transmission
- Project Substation
- BPA Substation
- Solar Array
- Solar Siting Area
- Laydown Yard
- Radar Tower
- Features Removed from Current Design



Reference Map




Visual Analysis showing Turbines with Low Impact on Visibility
Option 1 Project Map page 12 of the Moon memo

Will EFSEC even consider a reasonable alternative?

Stay Tuned!

Visual Analysis showing Turbines with Low Impact on Visibility
Option 1 Project Map page 12 of the Moon memo

Horse Heaven Wind Project




**Overview Map
Turbine Layout Option 1
BENTON COUNTY, WA**

- Project Lease Boundary
- Option 1 Turbine Layout
- 230-kV Interline Transmission Line
- County Well Road 500-kV Transmission Line
- Solar Interline 500-kV Transmission Line
- County Well Road 500-kV Transmission
- Project Substation
- BPA Substation
- Solar Array
- Solar Siting Area
- Laydown Yard
- Radar Tower
- Features Removed from Current Design

TETRA TECH

Reference Map



**The Future of Tri-Cities Is In Our Hands
Can We Succeed?**

We Need Your Help

*Donations directly support the litigation to
protect the Tri-Cities from the impacts of the
Horse Heaven Hills Wind Farm Project*

copyright John Clement Photography